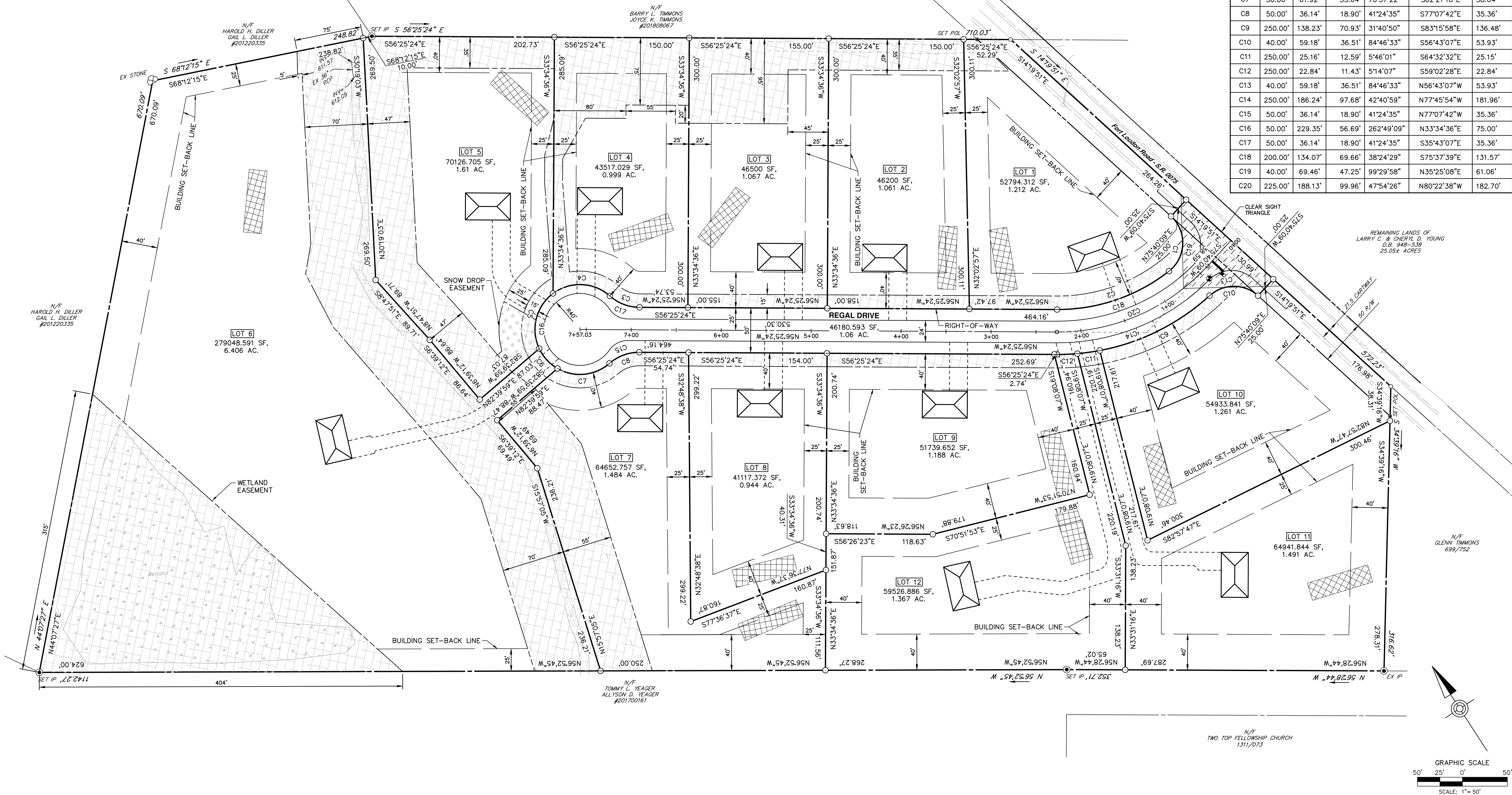


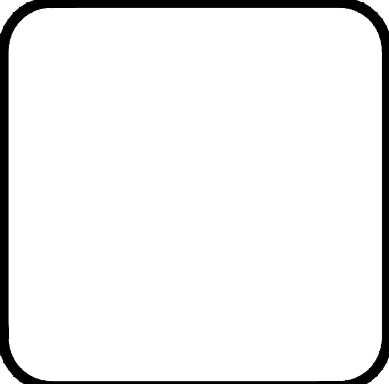
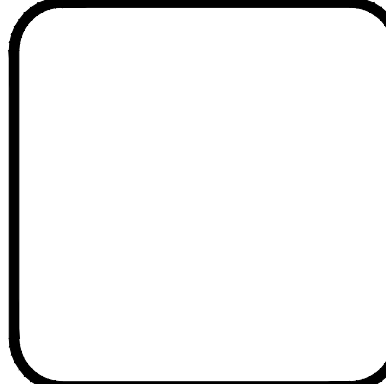
LEGEND

- Monument
- Nail
- ⊙ Iron Pipe
- ⊙ Iron Pin
- ⊙ Rail Road Spike
- ⊙ Benchmark
- ⊙ Stone Monument
- Property Line
- - - Legal Right-of-Way Line
- Setback Line
- - - Road Centerline
- - - Existing Edge of Road
- - - Existing Overhead Electric Line
- - - Existing Utility Pole
- - - Existing Storm Sewer Line
- - - Existing Storm Sewer Inlet
- PROPOSED MONUMENT
- PROPOSED REBAR
- PROPOSED PROPERTY LINE
- - - PROPOSED EASEMENT
- - - PROPOSED SIGN
- - - PROPOSED DRAINAGE EASEMENT
- PROPOSED SNOW DROP EASEMENT
- ▨ PROPOSED SEPTIC BED AREA

CURVE TABLE							
CURVE	RADIUS	LENGTH	TANGENT	DELTA	CHORD BEARING	DISTANCE	
C1	40.00'	69.46'	47.25'	99°29'58"	S35°25'08"W	61.06'	
C2	200.00'	134.07'	69.66'	38°24'29"	N75°37'39"W	131.57'	
C3	50.00'	36.14'	18.90'	41°24'35"	N35°43'07"W	35.36'	
C4	50.00'	68.46'	40.82'	78°27'07"	N54°14'23"W	63.24'	
C5	50.00'	68.48'	40.83'	78°28'21"	S47°17'53"W	63.25'	
C6	50.00'	30.49'	15.74'	34°56'20"	S9°24'27"E	30.02'	
C7	50.00'	61.92'	35.64'	70°57'22"	S62°21'18"E	58.04'	
C8	50.00'	36.14'	18.90'	41°24'35"	S77°07'42"E	35.36'	
C9	250.00'	138.23'	70.93'	31°40'50"	S83°15'58"E	136.48'	
C10	40.00'	59.18'	36.51'	84°46'33"	S56°43'07"E	53.93'	
C11	250.00'	25.16'	12.59'	5°46'01"	S64°32'32"E	25.15'	
C12	250.00'	22.84'	11.43'	5°14'07"	S59°02'28"E	22.84'	
C13	40.00'	59.18'	36.51'	84°46'33"	N56°43'07"W	53.93'	
C14	250.00'	186.24'	97.68'	42°40'59"	N77°45'54"W	181.96'	
C15	50.00'	36.14'	18.90'	41°24'35"	N77°07'42"E	35.36'	
C16	50.00'	229.35'	56.69'	262°49'09"	N33°34'36"E	75.00'	
C17	50.00'	36.14'	18.90'	41°24'35"	S35°43'07"E	35.36'	
C18	200.00'	134.07'	69.66'	38°24'29"	S75°37'39"E	131.57'	
C19	40.00'	69.46'	47.25'	99°29'58"	N35°25'08"E	61.06'	
C20	225.00'	188.13'	99.96'	47°54'26"	N80°22'38"W	182.70'	



NO.	REVISION	DATE	BY



HRG
Herbert, Rowland & Grubic, Inc.
Engineering & Related Services
AN EMPLOYEE-OWNED COMPANY

207 Grant Street
Chambersburg, PA 17201
(717) 263-2070
hrghrg-inc.com
www.hrg-inc.com

OLIVER HOMES, INC.
19733 LEITERSBURG PIKE
HAGERSTOWN, PA 21742

301.797.0000

SUBDIVISION PLAN
FOR
TWIN HILL MEADOWS

MONTGOMERY TOWNSHIP FRANKLIN COUNTY PENNSYLVANIA

PROJ. MGR. - SBB
DESIGN - LTD/CAC
CADD - TLB
CHECKED - LTD
SCALE - AS SHOWN
DATE - 2022.10.10

DRAWING NO.
EXH-4
SHEET NO.
1 OF 1
PROJECT R008538.0425